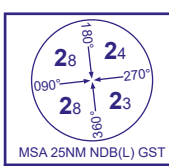


INSTRUMENT APPROACH CHART - ICAO

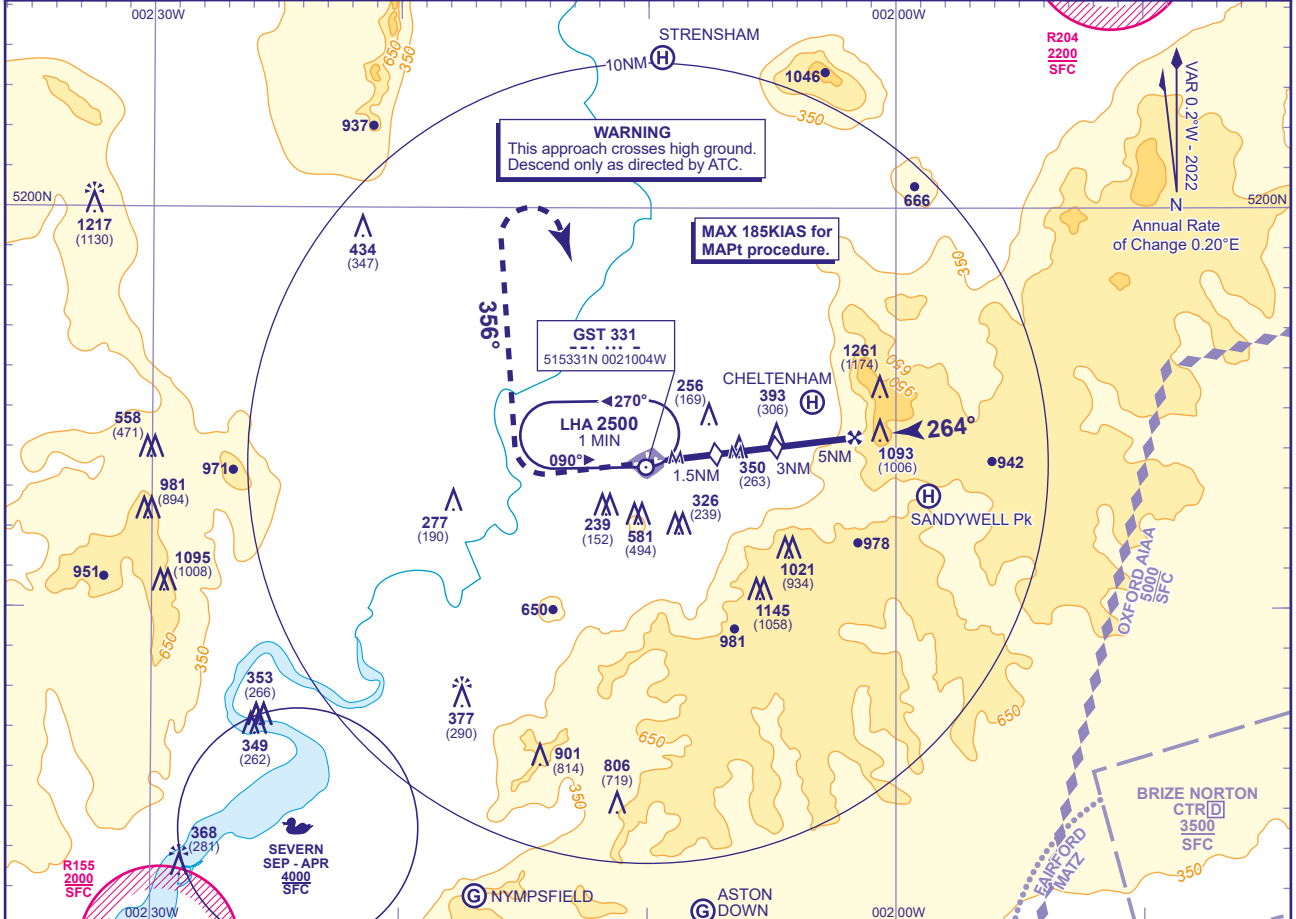
GLOUCESTERSHIRE

SRA RTR  
0.5NM/2NM  
RWY 27  
(ACFT CAT A,B,C)

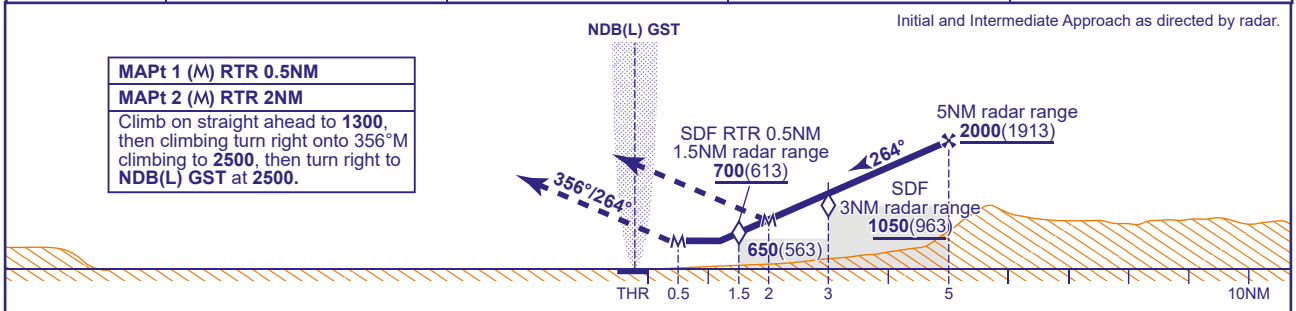


APP	128.555	GLOSTER APPROACH	AD ELEVATION	101
TWR	122.905	GLOSTER TOWER	THR ELEVATION	87
RAD	128.555, 120.980	GLOSTER RADAR	OBSTACLE ELEVATION	1261 AMSL (1174) (ABOVE THR)
ATIS	127.480	GLOSTER INFORMATION	BEARINGS ARE MAGNETIC	

TRANSITION ALTITUDE  
3000



RADAR ADVISORY HEIGHTS Gradient 6.13%, 373FT/NM				
NM	5.0	4.0	3.0 (SDF)	2.0
ALT(HGT)	2000(1913)	1630(1543)	1250(1163)	880(793)



Aircraft Category		A	B	C	Rate of descent	G/S KT	160	140	120	100	80
OCA (OCH)	SRA RTR 0.5NM	600(513)	600(513)	600(513)		FT/MIN	990	870	750	620	500
	SRA RTR 2NM	880(793)	880(793)	880(793)							
VM(C)OCA (OCH AAL)	Total Area	1000(899)	1000(899)	1500(1399)							
	North of RWYs 04/22 and 09/27	830(729)	830(729)								

NOTES 1 Aircraft will normally be required to hold not lower than 4000 or the equivalent FL.  
2 No missed approach turns permitted before MAPt.  
3 Radar Advisory Ranges are referenced to RWY THR.

CHANGE (7/21): DEFFORD HIRTA REMOVED. MAG VAR. MAG TRACKS. AD 2.10 OBSTACLES REVISED. ULLENWOOD HELI REMOVED. SANDYWELL PK HELI ADDED.  
AERO INFO DATE 04 MAY 21  
AD 2-EGBJ-8